

Welcome to *Britannica Online School Edition* www.school.eb.com

Britannica Online School Edition offers encyclopedias and related materials for students of all levels. Users can also take advantage of the Learning Materials, a collection of educational exercises, activities, and study guides.

Main Home Page for All Students

Britannica Online *School Edition* PreK-12

[HOME](#) | [DICTIONARY](#) | [LEARNING MATERIALS](#) | [TEACHERS' RESOURCES](#) | [WORKSPACE](#) | [GUIDED TOUR](#) | [HELP](#)

» Welcome... Choose a Level to Explore, Search, and Learn.

Elementary School [View this level ▶](#)

Search Level-Appropriate Reference Articles, Journals and Magazines, the Web's Best Sites, Multimedia, and Curriculum Content.

- Merriam-Webster Dictionary
- World Atlas
- plus **Britannica Learning Zone** FOR PRE-K-2
- Workspace

Middle School

Search Level-Appropriate Reference Articles, Journals and Magazines, the Web's Best Sites, Multimedia, and Curriculum Content.

- Merriam-Webster Dictionary
- World Atlas
- Workspace

High School

Search Level-Appropriate Reference Articles, Journals and Magazines, the Web's Best Sites, Multimedia, and Curriculum Content.

- Merriam-Webster Dictionary
- World Atlas
- Workspace

Search
Type in a word or phrase and click **Go**. Results will include age-appropriate resources for each of the three K-12 levels.

Britannica Learning Zone
Explore the interactive learning environment for grades PreK-2.

Choose a Level
Go to the three main sections of the site, each with comprehensive, age-appropriate content.

Search All Levels » [GO](#) [» Additional Databases](#)

Teachers' Resources

- Curriculum Standards
- Learning Materials
- Training Materials

Teacher Resources
Access timesaving lesson plans, interactive content, educational games, and videos that reinforce classroom concepts.

**FREE Online Training for
Subscribers!**

Sign up at www.info.eb.com/webinar

K-12 Search Results for All Students



ENCYCLOPEDIA
Britannica Online *School Edition*



New Search
Start a new search here. Check the box at right for spell checking.

whale



Unsure of the spelling? [Search Tips](#)

HOME :: DICTIONARY :: LEARNING MATERIALS :: TEACHERS' RESOURCES :: WORKSPACE :: GUIDED TOUR :: HELP

Encyclopædia Britannica

For High School Students and up
Results 1-10 of 506

whale



any of the larger species of aquatic mammals belonging to the order Cetacea. The term whale can be used in reference to any cetacean, including porpoises and dolphins, but in general it is applied to ...

View: [Article](#) | [Images](#) | [Index Entry](#) | [Multimedia](#) | [Tables](#)

[whale louse](#)

(family Cyamidae), any of a small group of highly specialized peracaridan crustaceans (order Amphipoda) related to the familiar skeleton shrimp found in shallow marine habitats. Whale lice are ...

View: [Article](#) | [Index Entry](#)

[baleen whale](#)

any cetacean possessing unique epidermal modifications of the mouth called baleen, which is used to filter food from water.

View: [Article](#) | [Index Entry](#)

[fin whale](#)



a slender baleen whale, second in size to the blue whale and distinguishable by its asymmetrical coloration. The fin whale is generally gray with a white underside, but the right side of the head has ...

View: [Article](#) | [Images](#) | [Index Entry](#) | [Multimedia](#)

[More Articles](#)

Compton's Encyclopedia

For Middle School Students and up
Results 1-10 of 218.

whale

Three Levels
Select an article based on reading level.

Earth's largest animal. Larger than the largest of ancient dinosaurs, blue whales can grow to be more than 100 feet (30 meters) long and weigh nearly 150 tons. Not all whales are so large. The much smaller pilot whale ...

[whale shark](#)



the largest fish in the world. The whale shark is the only member of the family Rhincodontidae, which is in the carpet shark order, Orectolobiformes. The sole member of the genus Rhincodon as well, the whale shark has the scientific name *R. typus*.

[Toothed Whales](#)

[from the whale article](#)



The toothed whales include more than 65 species in six ...

[More Articles](#)

Elementary Encyclopedia

For Elementary Students and up
Results 1-10 of 61.

whale



The sea animals known as whales are among the most fascinating members of the animal kingdom. They spend all of their lives in water, yet they are not fish. Instead they are mammals—they breathe air, give birth to live young, and nurse their young like humans do. One type of whale, the blue whale, ...

[Whale hunting](#)
[from the whale article](#)

Whales have been hunted for thousands of years. Ancient peoples used whale meat to feed themselves. In more recent times people have killed whales for other ...

[More Articles](#)

Additional Content

Journals and Magazines

Grades 1-5
Grades 6-9
Grades 10-12

[Britannica Concise Encyclopedia](#)
[The Web's Best Sites](#)

Additional Content

Access more information on your topic in Journals and Magazines, the *Britannica Concise Encyclopedia*, and the Web's Best Sites, selected by Britannica editors.

Multimedia

Results 1-3 of 59.

[whale: killer whale](#)



Length: 24-27 m (79-89 ft)

[beluga](#)



[More Multimedia](#)

Learning Materials

Results 1-1 of 1.

[Barnum Means Big](#)

A brief history of the Greatest Show on Earth and the people who created it.

Learning Materials

Expand upon the reference materials with activities, manipulatives, interactive lessons, and more.

ENCYCLOPEDIA BRITANNICA
ONLINE SCHOOL EDITION
For all Students

ENCYCLOPEDIA BRITANNICA
For High School Students and up

COMPTON'S BY BRITANNICA
For Middle School Students and up

BRITANNICA ELEMENTARY
For Elementary Students and up

Change Levels

Use the links at the bottom of any page to switch to another level or run a search in a different level.

Encyclopedia Articles



Search:

Unsure of the spelling? [Search Tips](#)

HOME :: [DICTIONARY](#) :: [LEARNING MATERIALS](#) :: [TEACHERS' RESOURCES](#) :: [WORKSPACE](#) :: [GUIDED TOUR](#) :: [HELP](#)

This Article's Table of Contents

- Introduction
- General Characteristics
- Baleen Whales
- Toothed Whales
- Evolution
- History of Whaling
- Conservation
- Additional references about whale

[Print this Table of Contents](#)



Unsure of the meaning of a word? Double-click it to look it up in Merriam-Webster's Dictionary.

Vocabulary Help
Double-click on a word for definitions and pronunciations.

Compton's Encyclopedia

whale



Humpback whale (*Megaptera novaeangliae*) breaching. Al Giddings—Images Unlimited

but lives beneath the sea. The blue whale is Earth's largest animal. Larger than the largest of ancient dinosaurs, blue whales can grow to be more than 100 feet (30 meters) long and weigh nearly 150 tons. Not all whales are so large.

The much smaller pilot whale grows to about 28 feet (8.5 meters) in length, and dolphins, which belong to the whale family, range only from 3 to 13 feet (1 to 4 meters). Although whales spend their lives in the sea, they are, like humans, endothermic, or warm-blooded, mammals. After a baby whale is born, it nurses on its mother's milk, just like the young of land mammals.

Whales are members of the order Cetartiodactyla and the narwhal (see [Dolphin](#)). Living whales: baleen, or [Mysticeti](#); and toothed whales, or [Cetacea](#).

Main Entry: mam·mal
Pronunciation: 'mam-əl
Function: noun
: any of a class of warm-blooded vertebrates that include human beings and all other animals that nourish their young with milk produced by mammary glands and have the skin usually more or less covered with hair

Curriculum Standards, Save to Workspace, Print, E-mail, or Cite Articles
Helpful buttons appear at the top of each article.

- Expand your Research:
- [Images & Media](#)
 - [Journals & Magazines](#)
 - [The Web's Best](#)
 - [Additional References](#)

Expand Your Research
Click the links to view additional content related to your topic.

Workspace Projects

Baleen Whales

[Baleen Whales](#)

[Open Workspace](#)

Workspace
Collect your own research materials and come back to them later.

[Turn on Spanish Translator](#) Check the box and then mouse over each word in the article to see the Spanish translation.

[Back to top](#)

Page 1 of 8
Introduction [Next Page](#)
General Characteristics

To cite this page:

MLA style:

"whale." Compton's by Britannica. 2007. Encyclopædia Britannica Online School Edition. 6 Sept. 2007. <http://www.school_eb.com/all/comptons/article-927718>.

APA style:

whale. (2007). In Compton's by Britannica. Retrieved September 6, 2007, from Encyclopædia Britannica Online School Edition: http://www.school_eb.com/all/comptons/article-927718

Cite Right
Use correct citations at the bottom of each page.

ENCYCLOPEDIA BRITANNICA
ONLINE SCHOOL EDITION
For all Students

ENCYCLOPEDIA BRITANNICA
For High School Students and up

COMPTON'S BY BRITANNICA
For Middle School Students and up

BRITANNICA ELEMENTARY
For Elementary Students and up

Search Again

Change Databases
Click the buttons to change the reading level.

Search

[Comments and Questions](#) :: [Subscription Form](#) :: [Copyright Guidelines/Usage Agreement](#) :: [Legal Notices](#)

Learning Materials



ENCYCLOPEDIA
Britannica Online *School Edition*



Search:

GO

Unsure of the spelling? [Search Tips](#)

[HOME](#) :: [DICTIONARY](#) :: [LEARNING MATERIALS](#) :: [TEACHERS' RESOURCES](#) :: [WORKSPACE](#) :: [GUIDED TOUR](#) :: [HELP](#)

What do you want to learn more about?

[Language Arts](#)
[Mathematics](#)
[Science](#)
[Social Studies](#)

Study guides, activities, and exercises make learning more fun.

Choose a subject from the list above to browse our Learning Materials.

LEARNING MATERIALS

Science > Biology/Life Science > Interactive Lessons

Note: These activities require Shockwave and may take a while to download using modem connections of 56k or less.

[AIDS: How HIV Attacks and Destroys the Immune System](#)



Explanation of how HIV replicates in T4 cells and compromises the immune system.

[Standards](#)

[Cloning](#)



The method by which Dolly the sheep was cloned is presented along with the ethical considerations of human cloning.

[Standards](#)

[Digestive System](#)



Introduction to the process by which food is dissolved and chemically converted to forms that the body's cells can use.

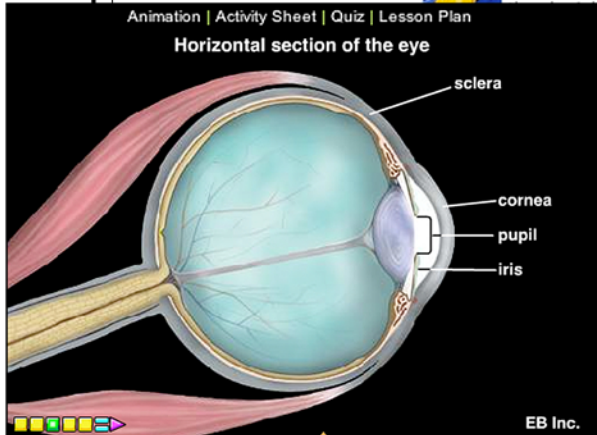
[Standards](#)

[Dreams](#)



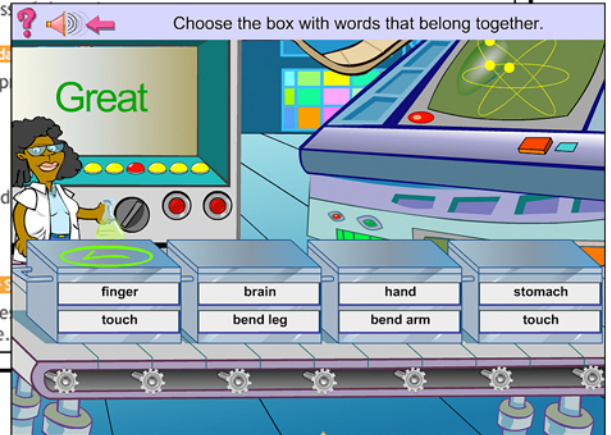
An introduction to various aspects of dreaming including different cultural and historical perspectives of dreams, dream interpretation, and logical processes.

[Standards](#)



Multimedia Presentations

Striking images and descriptive audio will engage curious children. The links at the top provide additional Activities, Quizzes, Lesson Plans, and more.



Multiple Levels of Learning

Students can choose the level of difficulty and progress to the next level over time.

FREE Online Training for Subscribers!

Sign up at www.info.eb.com/webinar